

Sample Information

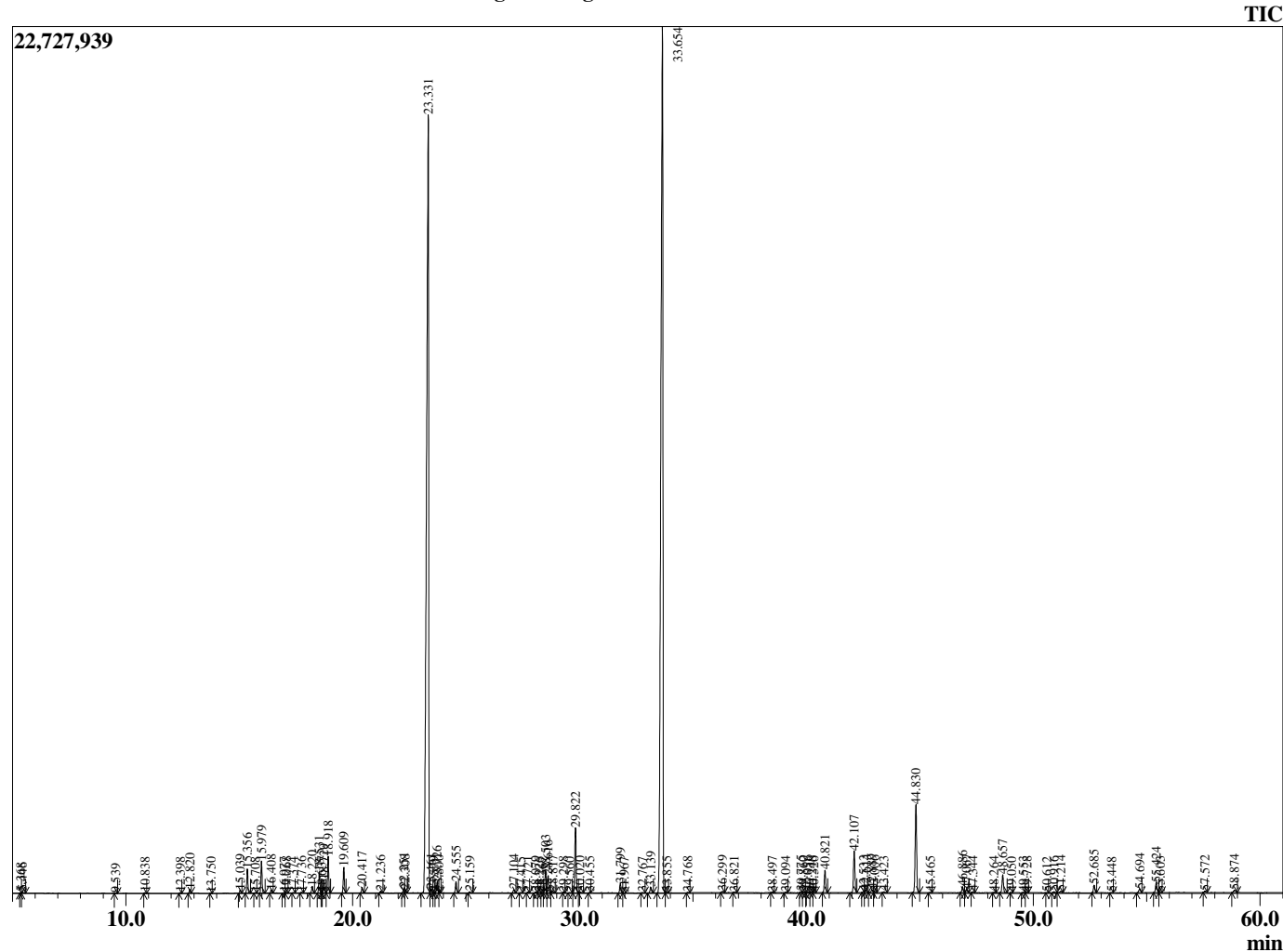
Analyzed by : Dr. Robert S. Pappas
 Analyzed : 2/24/2021 10:14:53 PM
 Sample Type : Essential Oil
 Sample Name : Bergamot Mint Oil - Davina Wellness
 Sample ID : G0D0817G
 Injection Volume : 0.10
 Instrument ID : GC-3



Peak Report TIC

R.Time	Name	Area%
4.176	3-Methylbutanal	0.02
4.287	2-Methylbutanal	0.01
5.368	1-Pentanol	0.02
5.446	Unidentified	0.04
9.539	Hexanol	0.01
10.838	2,5-Diethyltetrahydrofuran	0.02
12.398	alpha-Thujene	0.02
12.820	alpha-Pinene	0.09
13.750	Camphene	0.01
15.039	Sabinene	0.09
15.356	beta-Pinene	0.65
15.708	3-Octanone	0.01
15.979	Myrcene	0.87
16.408	3-Octanol	0.08
16.977	Herboxide isomer	0.01
17.068	alpha-Phellandrene	0.02
17.374	Unidentified	0.01
17.736	alpha-Terpinene	0.02
18.220	para-Cymene	0.20
18.531	Limonene	0.59
18.637	beta-Phellandrene	0.02
18.729	1,8-cineole	0.37
18.918	(Z)-beta-Ocimene	0.98
19.609	(E)-beta-Ocimene	0.70
20.417	gamma-Terpinene	0.16
21.236	cis-Linalool oxide (furanoid)	0.05
22.251	Terpinolene	0.14
22.308	trans-Linalool oxide (furanoid)	0.06
23.331	Linalool	39.45
23.461	2-Methylbutyl-2-methylbutyrate	0.12
23.579	Unidentified	0.02
23.726	1-Octen-3-yl acetate-	0.37
23.800	2-Methylbutyl isovalerate	0.03
24.555	3-Octyl acetate	0.33
25.159	allo-Ocimene	0.04
27.104	Menthone	0.10
27.415	trans-Pinocamphone	0.02
27.721	Isomenthone	0.02
28.079	Neomenthol	0.03
28.226	Unidentified	0.01
28.367	Unidentified	0.01
28.503	Isopinocampone	0.71
28.616	Menthol	0.53
28.817	Terpinen-4-ol	0.05
29.298	Unidentified	0.03
29.560	Methyl salicylate	0.01
29.822	alpha-Terpineol	2.09
30.020	Unidentified	0.05
30.455	Unidentified	0.01
31.799	Nerol	0.30
31.967	Citronellol	0.01
32.767	Unidentified	0.02
33.139	Carvone	0.20
33.654	Linalyl acetate	42.18
33.855	Unidentified	0.03
34.768	Geranial	0.01
36.299	Menthyl acetate	0.05
36.821	Unidentified	0.02
38.497	Myrtenyl acetate	0.03
39.094	Unidentified	0.02
39.775	Myrcen-8-yl acetate	0.04
39.860	Unidentified	0.02

Chromatogram Bergamot Mint Oil - Davina Wellness



Comments:

The analysis of this Bergamot Mint batch sample meets the expected chemical profile for authentic essential oil of *Mentha citrata*. No contamination or adulteration was detected. The results provided in this GCMS quality analysis reflect the chemical composition of the oil and lot referenced above on the date of analysis.

R.Time	Name	Area%
40.056	alpha-Terpinyl acetate	0.04
40.248	Citronellyl acetate	0.03
40.320	Eugenol	0.02
40.821	Neryl acetate	0.72
42.107	Geranyl acetate	1.44
42.533	Unidentified	0.04
42.614	Unidentified	0.08
42.889	beta-Elemene	0.11
43.006	(Z)-Jasmone	0.05
43.423	Unidentified	0.03
44.830	trans-beta-Caryophyllene	3.10
45.465	beta-Copaene	0.02
46.886	(E)-beta-Farnesene	0.20
47.067	alpha-Humulene	0.11
47.344	Alloaromodendrene	0.03
48.264	trans-Cadina-1(6),4-diene	0.01
48.657	Germacrene D	0.63
49.050	Unidentified	0.01
49.553	Bicyclogermacrene	0.02
49.728	alpha-Murolene	0.01
50.612	gamma-Cadinene	0.01
50.916	delta-Cadinene	0.04
51.214	beta-Dihydroagarofuran	0.06
52.685	Elemol	0.26
53.448	Nerolidol	0.01
54.694	Caryophyllene oxide	0.16
55.424	Viridiflorol	0.36
55.603	Unidentified	0.01
57.572	gamma-Eudesmol	0.04
58.874	alpha-Eudesmol	0.12
		100.00