

Sample Information

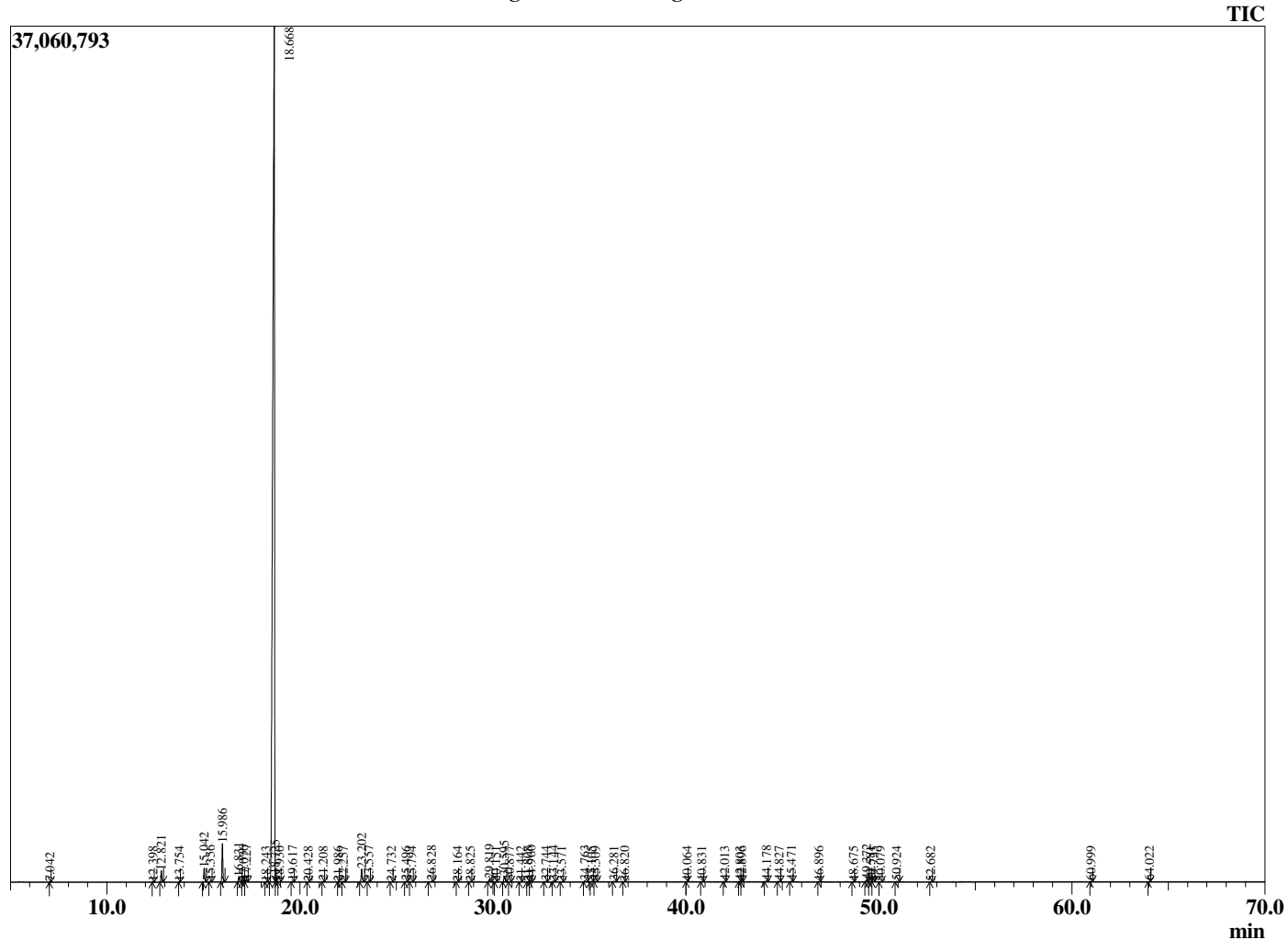
Analyzed by : Dr. Robert S. Pappas  
 Analyzed : 2/24/2021 8:16:53 PM  
 Sample Type : Essential Oil  
 Sample Name : Blood Orange - Davina Wellness  
 Sample ID : G0E0119E  
 Injection Volume : 0.10  
 Instrument ID : GC-3



Peak Report TIC

R.Time	Name	Area%
7.042	Hexanal	0.00
12.398	alpha-Thujene	0.01
12.821	alpha-Pinene	0.58
13.754	Camphene	0.00
15.042	Sabinene	0.76
15.356	beta-Pinene	0.06
15.986	Myrcene	2.07
16.831	Octanal	0.26
17.076	alpha-Phellandrene	0.06
17.227	delta-3-Carene	0.14
18.243	para-Cymene	0.02
18.668	Limonene	93.19
18.725	beta-Phellandrene	0.17
18.930	(Z)-beta-Ocimene	0.01
19.617	(E)-beta-Ocimene	0.04
20.428	gamma-Terpinene	0.02
21.208	Octanol	0.04
21.986	Isoterpinolene	0.01
22.257	Terpinolene	0.04
23.202	Linalool	0.77
23.557	Nonanal	0.04
24.732	trans-para-Mentha-2,8-dien-1-ol	0.02
25.496	cis-Limonene oxide	0.03
25.794	trans-Limonene oxide	0.05
26.828	Citronellal	0.05
28.164	Nonanol	0.01
28.825	Terpinen-4-ol	0.02
29.819	alpha-Terpineol	0.17
30.151	Unidentified	0.01
30.595	Decanal	0.37
30.877	Octyl acetate	0.03
31.442	trans-Carveol	0.02
31.808	Nerol	0.01
31.960	Citronellol	0.04
32.744	Neral	0.04
33.144	Carvone	0.06
33.571	Unidentified	0.02
34.763	Geranial	0.08
35.105	Decanol	0.03
35.309	Perillaldehyde	0.03
36.281	Thymol	0.03
36.820	Carvacrol	0.01
40.064	Unidentified	0.01
40.831	Neryl acetate	0.02
42.013	alpha-Copaene	0.03
42.803	beta-Cubebene	0.02
42.896	beta-Elemene	0.03
44.178	Dodecanal	0.06
44.827	trans-beta-Caryophyllene	0.04
45.471	beta-Copaene	0.04
46.896	(E)-beta-Farnesene	0.02
48.675	Unidentified	0.01
49.372	Valencene	0.16
49.581	alpha-Selinene	0.01
49.735	Unidentified	0.01
50.079	(E,E)-alpha-Farnesene	0.02
50.924	delta-Cadinene	0.04
52.682	Unidentified	0.01
60.999	beta-Sinensal	0.02
64.022	alpha-Sinensal	0.01
		100.00

Chromatogram Blood Orange - Davina Wellness



Comments:

The analysis of this Blood Orange batch sample meets the expected chemical profile for authentic essential oil of *Citrus sinensis*. No contamination or adulteration was detected. The results provided in this GCMS quality analysis reflect the chemical composition of the oil and lot referenced above on the date of analysis.