

Sample Information

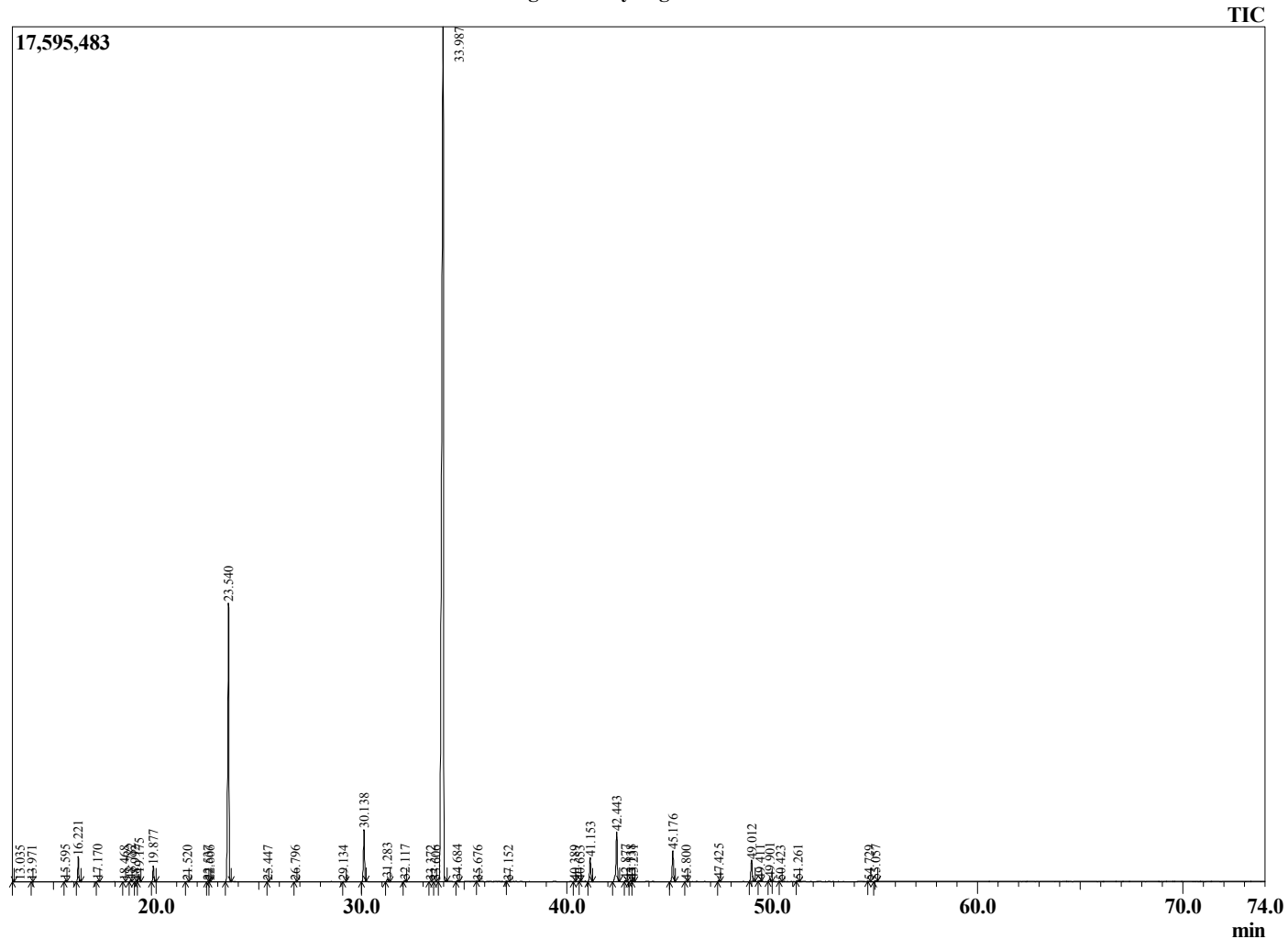
Analyzed by : Dr. Robert S. Pappas
 Analyzed : 6/3/2020 3:32:31 PM
 Sample Type : Essential Oil
 Sample Name : Clary Sage - Davina Wellness
 Sample ID : H0D0205K
 Injection Volume : 0.10
 Instrument ID : GC-2



Peak Report TIC

R.Time	Name	Area%
5.466	3-Methylbutanol	0.00
5.553	2-Methylbutanol	0.00
9.153	cis-3-Hexen-1-ol	0.01
9.555	trans-Hex-2-enol	0.01
9.700	n-Hexanol	0.01
13.035	alpha-Pinene	0.04
13.971	Camphene	0.01
15.595	beta-Pinene	0.05
16.221	Myrcene	1.11
17.170	Pseudolimonene	0.07
18.468	para-Cymene	0.01
18.782	Limonene	0.10
18.992	1,8-Cineole	0.01
19.175	cis-beta-Ocimene	0.33
19.877	trans-beta-Ocimene	0.75
21.520	cis-Linalool oxide (furanoid)	0.03
22.537	Terpinolene	0.04
22.606	trans-Linalool oxide	0.02
23.540	Linalool	15.60
25.447	allo-Ocimene	0.01
26.796	Camphor	0.02
29.134	Borneol	0.02
30.138	alpha-Terpineol	2.74
31.283	Linalyl formate	0.17
32.117	Nerol	0.07
33.372	Unidentified	0.03
33.606	Unidentified	0.03
33.987	Linalyl acetate	70.15
34.684	Unidentified	0.05
35.676	Bornyl acetate	0.02
37.152	Geranyl formate	0.03
40.389	alpha-Terpinyl acetate	0.03
40.653	Unidentified	0.01
41.153	Neryl acetate	1.30
42.443	Geranyl acetate	3.06
42.877	beta-Bourbonene	0.05
43.138	beta-Cubebene	0.07
43.231	beta-Elemene	0.06
45.176	beta-Caryophyllene	1.81
45.800	beta-Copaene	0.02
47.425	alpha-Humulene	0.10
49.012	Germacrene D	1.29
49.411	Valencene	0.06
49.901	Bicyclogermacrene	0.17
50.423	(E,E)-alpha-Farnesene	0.02
51.261	delta-Cadinene	0.04
54.729	Spathulenol	0.02
55.057	Caryophyllene oxide	0.07
86.896	Sclareol	0.25
		100.00

Chromatogram Clary Sage - Davina Wellness



Comments:

The analysis of this Clary Sage batch sample meets the expected chemical profile for authentic essential oil of *Salvia sclarea*. No contamination or adulteration was detected. The results provided in this GCMS quality analysis reflect the chemical composition of the oil and lot referenced above on the date of analysis.