

Sample Information

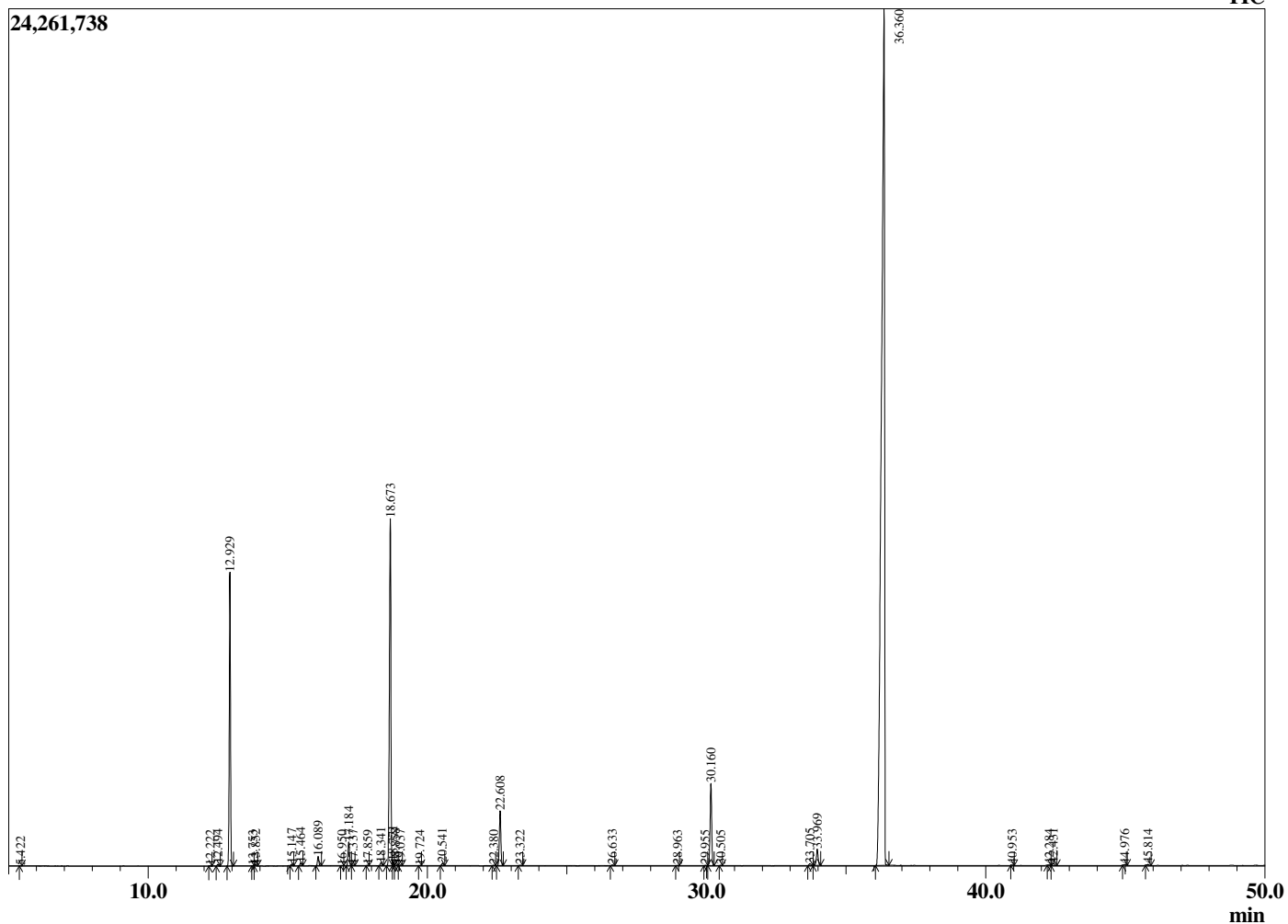
Analyzed by : Dr. Robert S. Pappas
 Analyzed : 2/18/2021 9:40:18 PM
 Sample Type : Essential Oil
 Sample Name : Fennel Oil-Davina Wellness
 Sample ID : G0D1214F
 Injection Volume : 0.10
 Instrument ID: GC-3



Peak Report TIC

R.Time	Name	Area%
5.422	1-Pentanol	0.00
12.222	Hashishene	0.01
12.494	alpha-Thujene	0.05
12.929	alpha-Pinene	9.40
13.753	alpha-Fenchene	0.01
13.852	Camphene	0.05
15.147	Sabinene	0.06
15.464	beta-Pinene	0.10
16.089	Myrcene	0.32
16.950	Octanal	0.01
17.184	alpha-Phellandrene	0.87
17.337	delta-3-Carene	0.02
17.859	alpha-Terpinene	0.01
18.341	para-Cymene	0.11
18.673	Limonene	13.38
18.771	beta-Phellandrene	0.14
18.858	1,8-Cineole	0.07
19.037	(Z)-beta-Ocimene	0.02
19.724	(E)-beta-Ocimene	0.00
20.541	gamma-Terpinene	0.09
22.380	Terpinolene	0.02
22.608	Fenchone	2.18
23.322	Linalool	0.02
26.633	Camphor	0.04
28.963	Terpinen-4-ol	0.01
29.955	alpha-Terpineol	0.01
30.160	Estragole	3.35
30.505	alpha-Phellandrene epoxide	0.01
33.705	Geraniol	0.08
33.969	para-Anisaldehyde	0.73
36.360	(E)-Anethole	68.62
40.953	Unidentified	0.01
42.284	Unidentified	0.03
42.431	Anisyl methyl ketone	0.10
44.976	trans-beta-Caryophyllene	0.04
45.814	trans-alpha-Bergamotene	0.05
		100.00

Chromatogram Fennel Oil-Davina Wellness



Comments:

The analysis of this Fennel, Sweet batch sample meets the expected chemical profile for authentic essential oil of *Foeniculum vulgare*. No contamination or adulteration was detected. The results provided in this GCMS quality analysis reflect the chemical composition of the oil and lot referenced above on the date of analysis.