

Sample Information

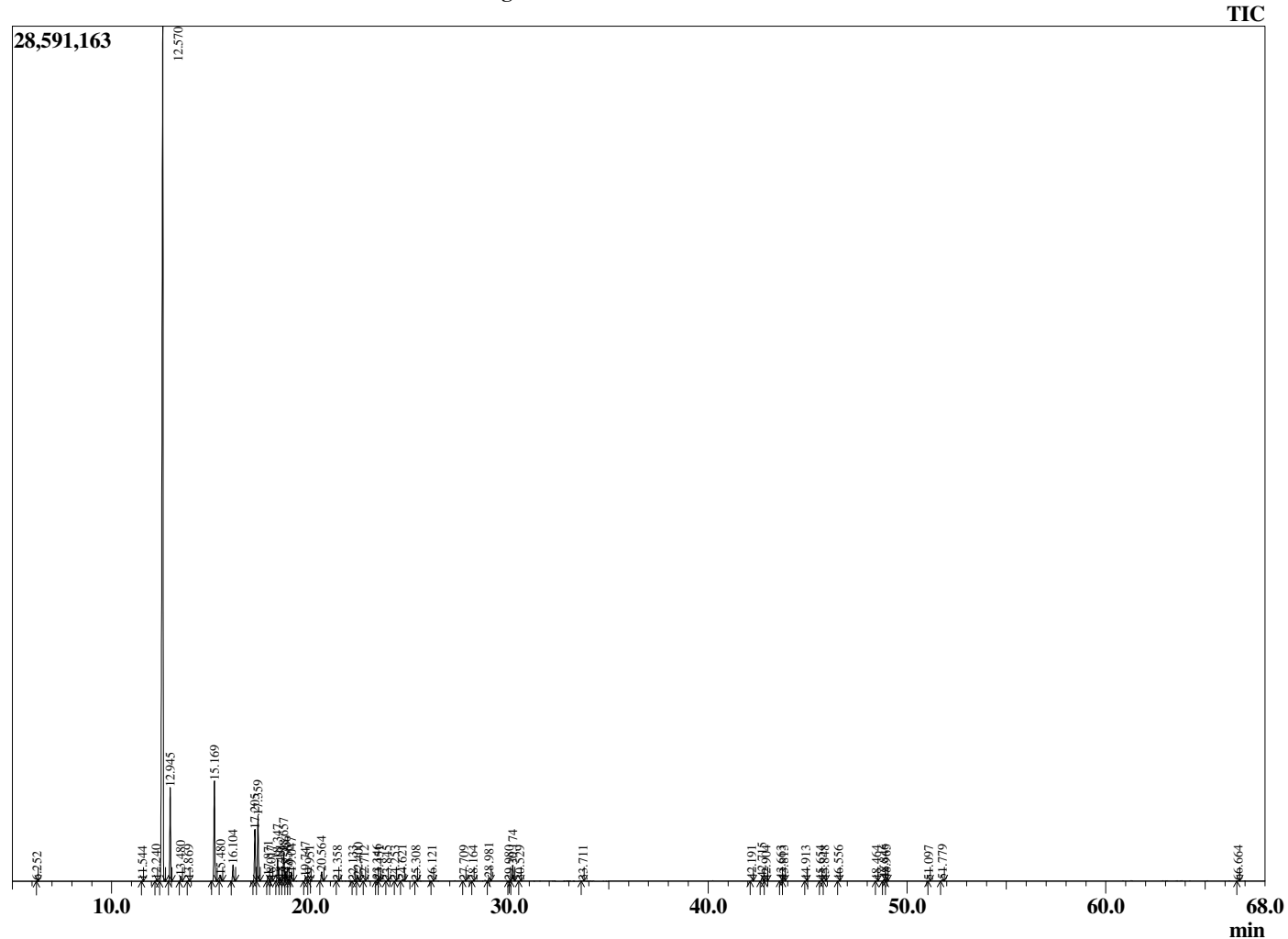
Analyzed by : Dr. Robert S. Pappas  
 Analyzed : 1/20/2021 6:05:01 PM  
 Sample Type : Essential Oil  
 Sample Name : Frankincense Oil-Davina Wellness  
 Sample ID : G0D0520J  
 Injection Volume : 0.10  
 Instrument ID : GC-3



Peak Report TIC

R.Time	Name	Area%
4.037	Unidentified	0.01
6.252	Toluene	0.01
11.544	Unidentified	0.01
12.240	Hashishene	0.08
12.570	alpha-Thujene	69.28
12.945	alpha-Pinene	5.48
13.480	Thuja-2,4(10)diene	0.30
13.869	Camphene	0.07
15.169	Sabinene	6.31
15.480	beta-Pinene	0.38
16.104	Myrcene	1.07
17.205	alpha-Phellandrene	3.50
17.359	delta-3-Carene	4.36
17.871	alpha-Terpinene	0.34
18.017	meta-Cymene	0.05
18.347	para-Cymene	1.42
18.481	Unidentified	0.11
18.657	Limonene	1.97
18.766	beta-Phellandrene	0.64
18.856	1,8-Cineole	0.02
19.047	(Z)-beta-Ocimene	0.59
19.747	(E)-beta-Ocimene	0.27
19.951	Unidentified	0.03
20.564	gamma-Terpinene	0.68
21.358	trans-Sabinene hydrate	0.03
22.133	Isoterpinolene	0.01
22.400	Terpinolene	0.27
22.712	para-Cymenene	0.01
23.346	Linalool	0.06
23.451	cis-Sabinene hydrate	0.02
23.845	beta-Thujone	0.01
24.253	Unidentified	0.01
24.621	alpha-Thujone	0.11
25.308	allo-Ocimene	0.02
26.121	trans-Sabinol	0.02
27.709	para-Mentha-1,5-dien-8-ol	0.01
28.164	Unidentified	0.03
28.981	Terpinen-4-ol	0.27
29.980	alpha-Terpineol	0.02
30.174	Estragole	1.23
30.529	alpha-Phellandrene epoxide	0.02
33.711	Linalyl acetate	0.02
42.191	alpha-Copaene	0.07
42.715	beta-Bourbonene	0.29
42.904	alpha-Bourbonene	0.02
43.663	Methyleugenol	0.04
43.813	Unidentified	0.03
44.913	beta-Ylangene	0.02
45.654	beta-Copaene	0.02
45.848	trans-alpha-Bergamotene	0.03
46.556	Unidentified	0.01
48.464	trans-Cadina-1(6),4-diene	0.01
48.846	Germacrene D	0.12
48.965	gamma-Himachelene	0.08
51.097	delta-Cadinene	0.01
51.779	Unidentified	0.09
66.664	Unidentified	0.02
		100.00

Chromatogram Frankincense Oil-Davina Wellness



Comments:

The analysis of this Frankincense batch sample meets the expected chemical profile for authentic essential oil of *Boswellia serrata*. No contamination or adulteration was detected. The results provided in this GCMS quality analysis reflect the chemical composition of the oil and lot referenced above on the date of analysis.