

Sample Information

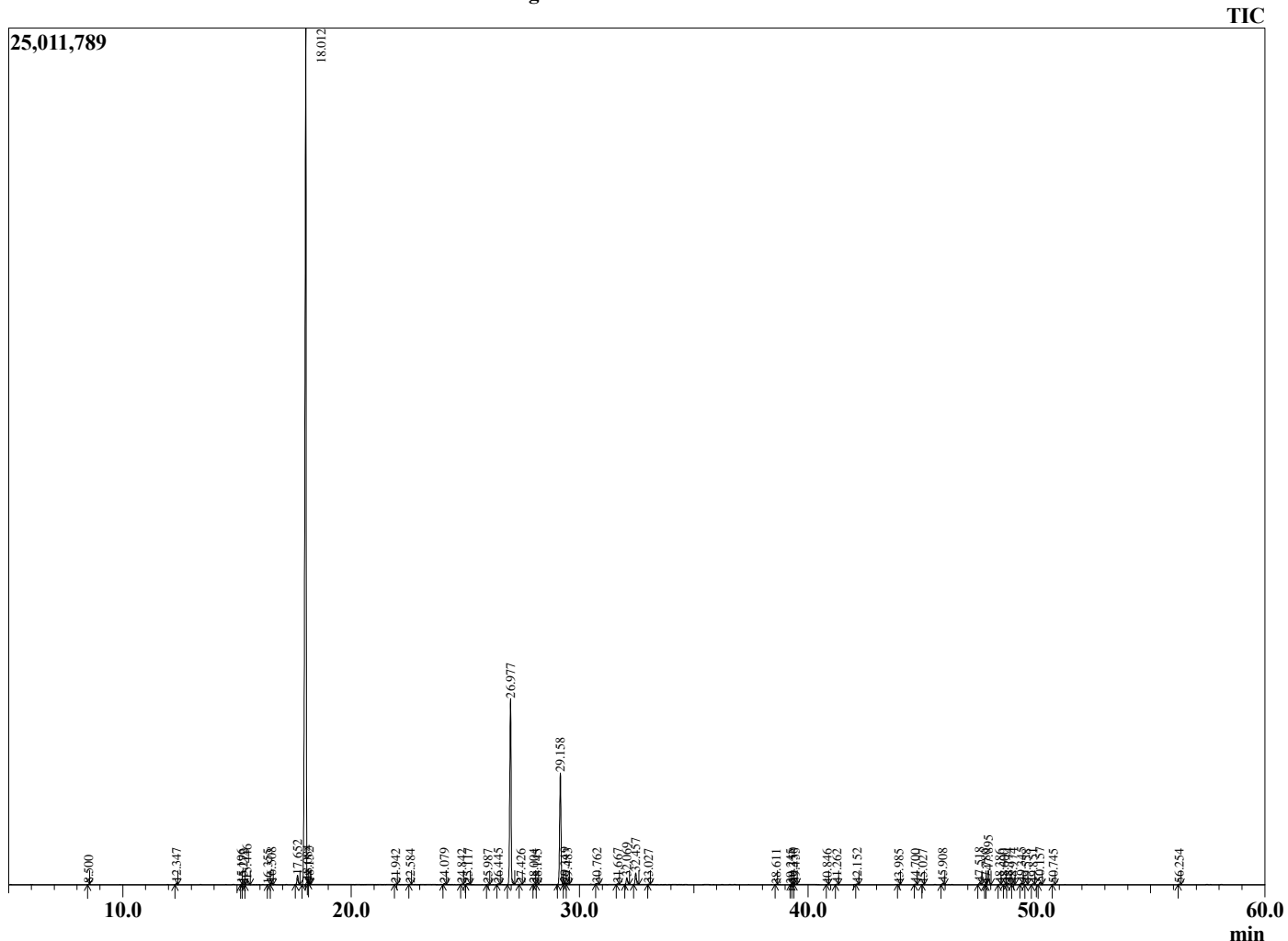
Analyzed by : Dr. Robert S. Pappas  
 Analyzed : 2/24/2021 5:29:25 PM  
 Sample Type : Essential Oil  
 Sample Name : Palo Santo-Davina Wellness  
 Sample ID : F0D0827A  
 Injection Volume : 0.10  
 Instrument ID : GC-4



Peak Report TIC

R.Time	Name	Area%
8.500	3-Methylcyclopentanone	0.02
12.347	alpha-Pinene	0.07
15.196	Unidentified	0.03
15.272	Unidentified	0.03
15.446	Myrcene	0.34
16.355	Pseudolimonene	0.02
16.508	alpha-Phellandrene	0.13
17.652	para-Cymene	0.68
18.012	Limonene	70.20
18.084	beta-Phellandrene	0.01
18.152	1,8-Cineole	0.02
21.942	para-Cymenene	0.03
22.584	Linalool	0.02
24.079	trans-para-Mentha-2,8-dien-1-ol	0.08
24.842	trans-Limonene oxide	0.03
25.117	cis-para-Mentha-2,8-dien-1-ol	0.13
25.987	trans-beta-Terpeneol	0.03
26.445	Menthone	0.07
26.977	Menthofuran	14.77
27.426	delta-Terpeneol	0.03
28.004	Unidentified	0.02
28.145	Terpinen-4-ol	0.01
29.158	alpha-Terpeneol	8.86
29.349	cis-Dihydrocarvone	0.12
29.483	Unidentified	0.07
30.762	trans-Carveol	0.07
31.667	cis-Carveol	0.04
32.069	Pulegone	0.55
32.457	Carvone	0.93
33.027	Unidentified	0.02
38.611	delta-Elementene	0.01
39.245	Unidentified	0.01
39.350	Menthylactone isomer	0.06
39.435	Menthylactone isomer	0.08
40.846	alpha-Ylangene	0.01
41.262	alpha-Copaene	0.04
42.152	beta-Elementene	0.05
43.985	beta-Ylangene	0.02
44.700	Unidentified	0.02
45.027	Unidentified	0.02
45.908	Unidentified	0.11
47.518	trans-Cadinane-1(6),4-diene	0.15
47.780	alpha-Amorphene	0.02
47.895	Germacrene D	1.24
48.386	Unidentified	0.03
48.600	Unidentified	0.02
48.774	Menthylactone	0.13
48.974	alpha-Murolene	0.06
49.345	(E,E)-alpha-Farnesene	0.12
49.558	beta-Bisabolene	0.03
49.851	gamma-Cadinene	0.07
50.157	delta-Cadinene	0.17
50.745	Unidentified	0.03
56.254	Unidentified	0.03
		100.00

Chromatogram Palo Santo-Davina Wellness



Comments:

The analysis of this Palo Santo batch sample meets the expected chemical profile for authentic essential oil of *Bursera graveolens*. No contamination or adulteration was detected. The results provided in this GCMS quality analysis reflect the chemical composition of the oil and lot referenced above on the date of analysis.