

Sample Information

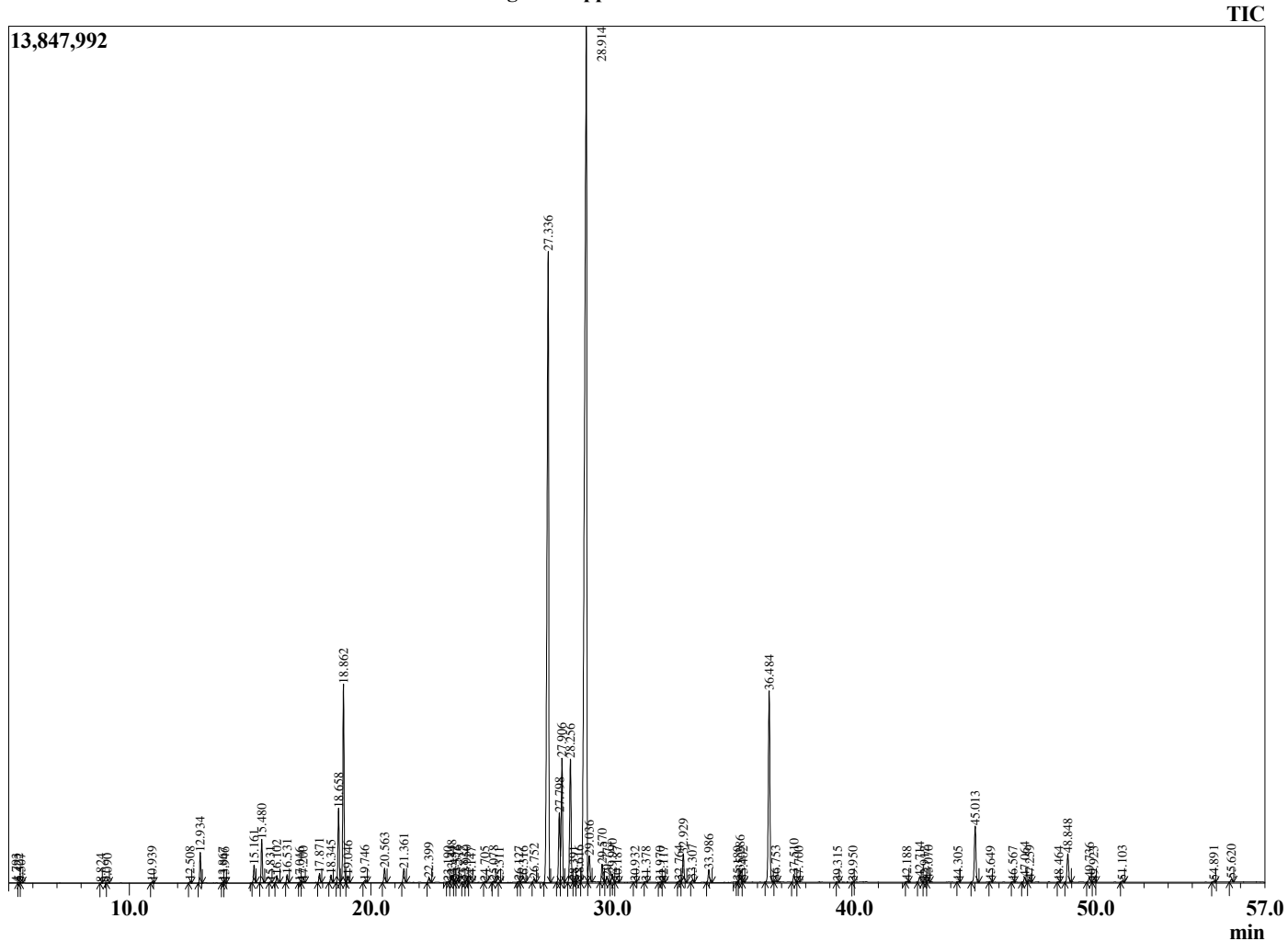
Analyzed by : Dr. Robert S. Pappas
 Analyzed : 1/20/2021 4:07:00 PM
 Sample Type : Essential Oil
 Sample Name : Peppermint Oil-Davina Wellness
 Sample ID : H0D0914J
 Injection Volume : 0.10
 Instrument ID : GC-3



Peak Report TIC

R.Time	Name	Area%
4.210	3-Methylbutanal	0.01
4.322	2-Methylbutanal	0.01
4.793	2-Ethylfuran	0.01
5.422	1-Pentanol	0.02
5.507	2-Methyl butanol	0.01
8.824	Ethyl 2-methylbutyrate	0.01
9.090	Hex-3(Z)-enol	0.01
10.939	2,5-Diethyltetrahydrofuran	0.03
12.508	alpha-Thujene	0.04
12.934	alpha-Pinene	0.73
13.867	Camphene	0.02
13.946	3-Methylcyclohexanone	0.02
15.161	Sabinene	0.43
15.480	beta-Pinene	1.08
15.831	3-Octanone	0.01
16.102	Myrcene	0.18
16.531	3-Octanol	0.20
17.046	Pseudolimonene	0.01
17.200	alpha-Phellandrene	0.03
17.871	alpha-Terpinene	0.24
18.345	para-Cymene	0.20
18.658	Limonene	2.04
18.862	1,8-cineole	5.37
19.046	(Z)-beta-Ocimene	0.18
19.746	(E)-beta-Ocimene	0.06
20.563	gamma-Terpinene	0.40
21.361	trans-Sabinene hydrate	0.40
22.399	Terpinolene	0.12
23.190	3-Nonanol	0.02
23.348	Linalool	0.19
23.452	cis-Sabinene hydrate	0.04
23.576	2-Methylbutyl-2-methylbutyrate	0.06
23.822	Isoamyl isovalerate	0.01
23.950	2-Methylbutyl isovalerate	0.06
24.147	Unidentified	0.01
24.705	3-Octyl acetate	0.02
25.078	cis-para-Menth-2-en-1-ol	0.03
25.311	Unidentified	0.01
26.127	trans-Sabinol	0.03
26.316	Unidentified	0.04
26.752	Isopulegol	0.11
27.336	Menthone	23.08
27.798	Menthofuran	2.14
27.906	Isomenthone	3.60
28.256	Neomenthol	3.78
28.391	Unidentified	0.02
28.616	trans-Isopulegone	0.08
28.914	Menthol	40.60
29.036	Terpinen-4-ol	0.88
29.570	Isomenthol	0.53
29.772	Neoisomenthol	0.16
29.990	alpha-Terpineol	0.26
30.187	Unidentified	0.03
30.932	Unidentified	0.01
31.378	Unidentified	0.02
31.970	Nerol	0.02
32.117	Citronellol	0.02
32.764	Hex-(3Z)-enyl Isovalerate	0.05
32.929	Pulegone	0.89
33.307	Carvone	0.07
33.986	Piperitone	0.39
35.180	Isopulegyl acetate	0.01

Chromatogram Peppermint Oil-Davina Wellness



Comments:

The analysis of this Peppermint batch sample meets the expected chemical profile for authentic essential oil of *Mentha piperita*. No contamination or adulteration was detected. The results provided in this GCMS quality analysis reflect the chemical composition of the oil and lot referenced above on the date of analysis.

R.Time	Name	Area%
35.286	Neomenthol acetate	0.37
35.402	Unidentified	0.02
36.484	Menthyl acetate	6.34
36.753	Dihydroedulan I	0.04
37.510	Isomenthol acetate	0.25
37.700	Unidentified	0.01
39.315	Unidentified	0.01
39.950	Myrcen-8-yl acetate	0.01
42.188	alpha-Copaene	0.03
42.714	beta-Bourbonene	0.18
42.912	alpha-Bourbonene	0.01
43.070	beta-Elemene	0.07
44.305	Unidentified	0.01
45.013	trans-beta-Caryophyllene	1.92
45.649	beta-Copaene	0.03
46.567	Unidentified	0.01
47.064	(E)-beta-Farnesene	0.17
47.259	alpha-Humulene	0.06
48.464	trans-Cadina-1(6),4-diene	0.01
48.848	Germacrene D	0.96
49.736	Bicyclogermacrene	0.16
49.923	alpha-Murolene	0.02
51.103	delta-Cadinene	0.05
54.891	Caryophyllene oxide	0.04
55.620	Viridiflorol	0.09
		100.00