

Sample Information

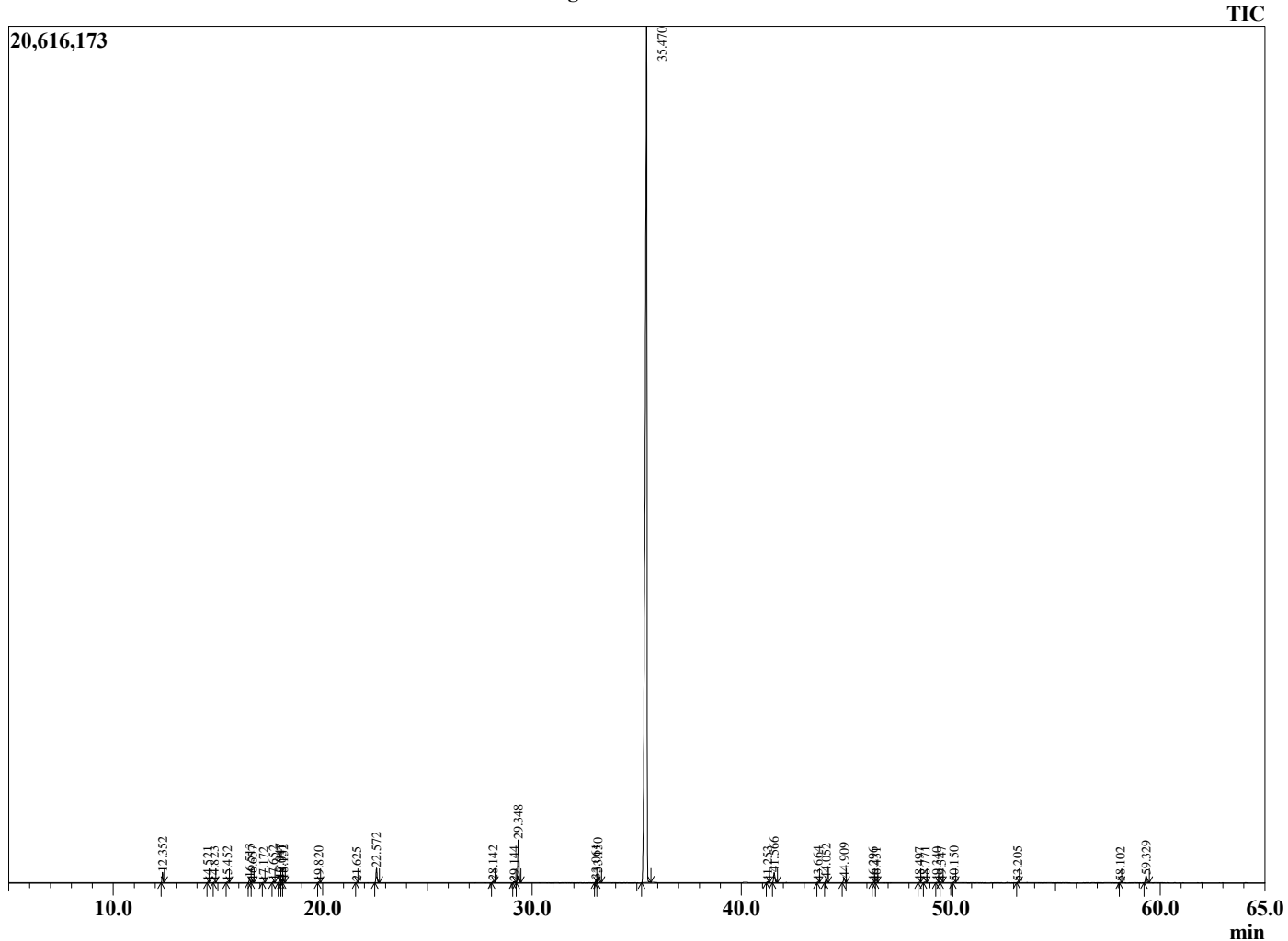
Analyzed by : Dr. Robert S. Pappas
 Analyzed : 2/24/2021 8:25:44 PM
 Sample Type : Essential Oil
 Sample Name : Star Anise - Davina
 Sample ID : E0C0121D
 Injection Volume : 0.10
 Instrument ID: GC-4



Peak Report TIC

R.Time	Name	Area%
12.352	alpha-Pinene	0.53
14.521	Sabinene	0.03
14.823	beta-Pinene	0.04
15.452	Myrcene	0.05
16.513	alpha-Phellandrene	0.24
16.657	delta-3-Carene	0.12
17.172	alpha-Terpinene	0.02
17.652	para-Cymene	0.09
17.947	Limonene	0.23
18.051	beta-Phellandrene	0.16
18.132	1,8-Cineole	0.18
19.820	gamma-Terpinene	0.04
21.625	Terpinolene	0.03
22.572	Linalool	0.93
28.142	Terpinen-4-ol	0.11
29.144	alpha-Terpineol	0.07
29.348	Estragole	2.94
33.061	(Z)-Anethole	0.16
33.150	para-Anisaldehyde	0.71
35.470	(E)-Anethole	90.94
41.253	alpha-Copaene	0.07
41.566	Anisyl methyl ketone	0.78
43.664	cis-alpha-Bergamotene	0.04
44.052	trans-beta-Caryophyllene	0.30
44.909	trans-alpha-Bergamotene	0.38
46.296	alpha-Humulene	0.02
46.431	(E)-beta-Farnesene	0.02
48.497	Viridiflorene	0.03
48.771	Bicyclogermacrene	0.06
49.340	(E,E)-alpha-Farnesene	0.02
49.547	beta-Bisabolene	0.04
50.150	delta-Cadinene	0.03
53.205	Unidentified	0.04
58.102	alpha-Cadinol	0.02
59.329	Foeniculin	0.55
		100.00

Chromatogram Star Anise - Davina



Comments:

The analysis of this Star Anise batch sample meets the expected chemical profile for authentic essential oil of *Illicium verum*. No contamination or adulteration was detected. The results provided in this GCMS quality analysis reflect the chemical composition of the oil and lot referenced above on the date of analysis.