

Sample Information

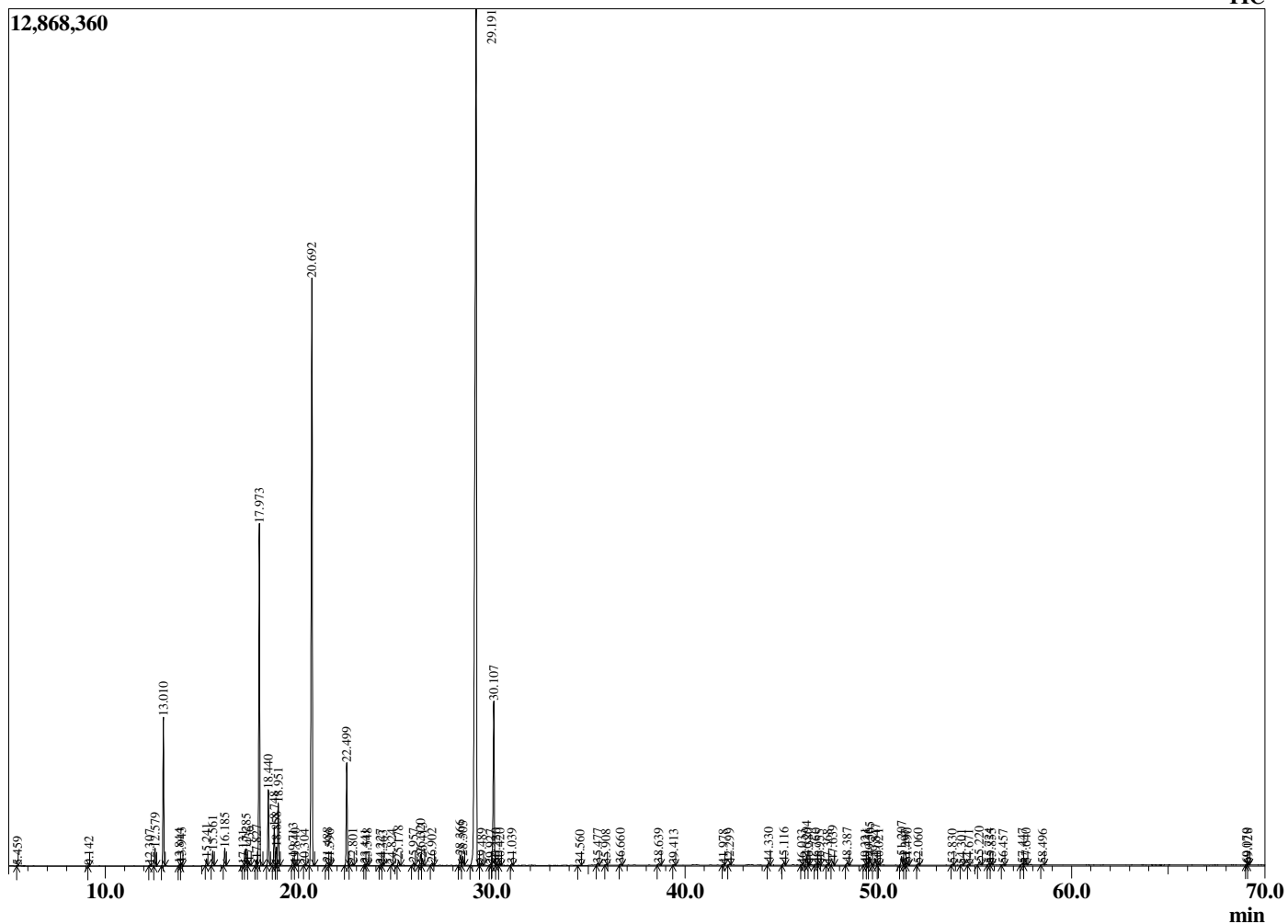
Analyzed by : Dr. Robert S. Pappas  
 Analyzed : 8/28/2020 1:12:58 AM  
 Sample Type : Essential Oil  
 Sample Name : Tea Tree - Davina Wellness  
 Sample ID : G0D0727A  
 Injection Volume : 0.10  
 Instrument ID : GC-3



Peak Report TIC

R.Time	Name	Area%
4.354	2-Methylbutanal	0.01
5.459	1-Pentanol	0.01
9.142	Hex-3(Z)-enol	0.01
12.307	Hashishene	0.03
12.579	alpha-Thujene	0.45
13.010	alpha-Pinene	3.85
13.844	alpha-Fenchene	0.05
13.943	Camphene	0.08
15.241	Sabinene	0.18
15.561	beta-Pinene	0.40
16.185	Myrcene	0.48
17.131	Unidentified	0.01
17.285	alpha-Phellandrene	0.49
17.436	delta-3-Carene	0.12
17.827	1,4-Cineole	0.18
17.973	alpha-Terpinene	10.39
18.440	para-Cymene	2.25
18.748	Limonene	1.18
18.858	beta-Phellandrene	0.55
18.951	1,8-cineole	1.89
19.713	2,2-Dimethyl-, 5-(1-methyl-1-propenyl)-tetrahydro-	0.24
19.840	(E)-beta-Ocimene	0.06
20.304	Unidentified	0.02
20.692	gamma-Terpinene	19.98
21.488	Unidentified	0.14
21.596	Unidentified	0.03
22.499	Terpinolene	3.21
22.801	p-Cymenene	0.07
23.441	Linalool	0.03
23.548	cis-Sabinene hydrate	0.06
24.227	Phenethyl alcohol	0.01
24.363	Unidentified	0.01
24.824	alpha-Fenchol	0.03
25.178	cis-para-Menth-2-en-1-ol	0.17
25.957	Terpin-3-en-1-ol	0.08
26.320	trans-Pinocarveol	0.36
26.413	trans-para-Menth-2-en-1-ol	0.24
26.902	Unidentified	0.08
28.366	delta-Terpineol	0.36
28.503	Borneol	0.32
29.191	Terpinen-4-ol	42.96
29.489	p-Cymen-8-ol	0.07
29.927	Unidentified	0.03
30.107	alpha-Terpineol	5.64
30.220	cis-Piperitol	0.04
30.420	gamma-Terpineol	0.05
31.039	trans-Piperitol	0.06
34.560	Unidentified	0.02
35.477	cis-Ascridol glycol	0.07
35.908	Unidentified	0.02
36.660	trans-Ascridol glycol	0.04
38.639	Unidentified	0.06
39.413	Unidentified	0.02
41.978	Unidentified	0.02
42.299	alpha-Copaene	0.04
44.330	alpha-Gurjunene	0.10
45.116	beta-Caryophyllene	0.10
46.033	Unidentified	0.02
46.294	Aromadendrene	0.35
46.380	Unidentified	0.04
46.760	alpha-Guaiene	0.05
46.955	trans-Murrola-3,5-diene	0.03

Chromatogram Tea Tree - Davina Wellness



Comments:

The analysis of this Tea Tree batch sample meets the expected chemical profile for authentic essential oil of *Melaleuca alternifolia*. No contamination or adulteration was detected. The results provided in this GCMS quality analysis reflect the chemical composition of the oil and lot referenced above on the date of analysis.

R.Time	Name	Area%
47.368	alpha-Humulene	0.02
47.639	Alloaromadendrene	0.15
48.387	10-beta-H-Cadina-1(6),4-diene	0.11
49.321	delta-Selinene	0.05
49.436	beta-Selinene	0.06
49.565	Viridiflorene	0.32
49.847	Bicyclogermacrene	0.27
50.021	alpha-Murolene	0.05
51.207	delta-Cadinene	0.33
51.397	Calamene isomer	0.03
51.490	Zonarene	0.08
52.060	trans-Cadine-1,4-diene	0.05
53.830	Unidentified	0.03
54.301	Unidentified	0.03
54.671	Spathulenol	0.02
55.220	Globulol	0.12
55.724	Viridiflorol	0.06
55.855	Guaiol	0.04
56.457	Eudesm-5-en-11-ol	0.03
57.447	Unidentified	0.05
57.640	1-epi-Cubenol	0.06
58.496	Unidentified	0.03
69.070	Unidentified	0.04
69.128	Unidentified	0.02
		100.00