

Sample Information

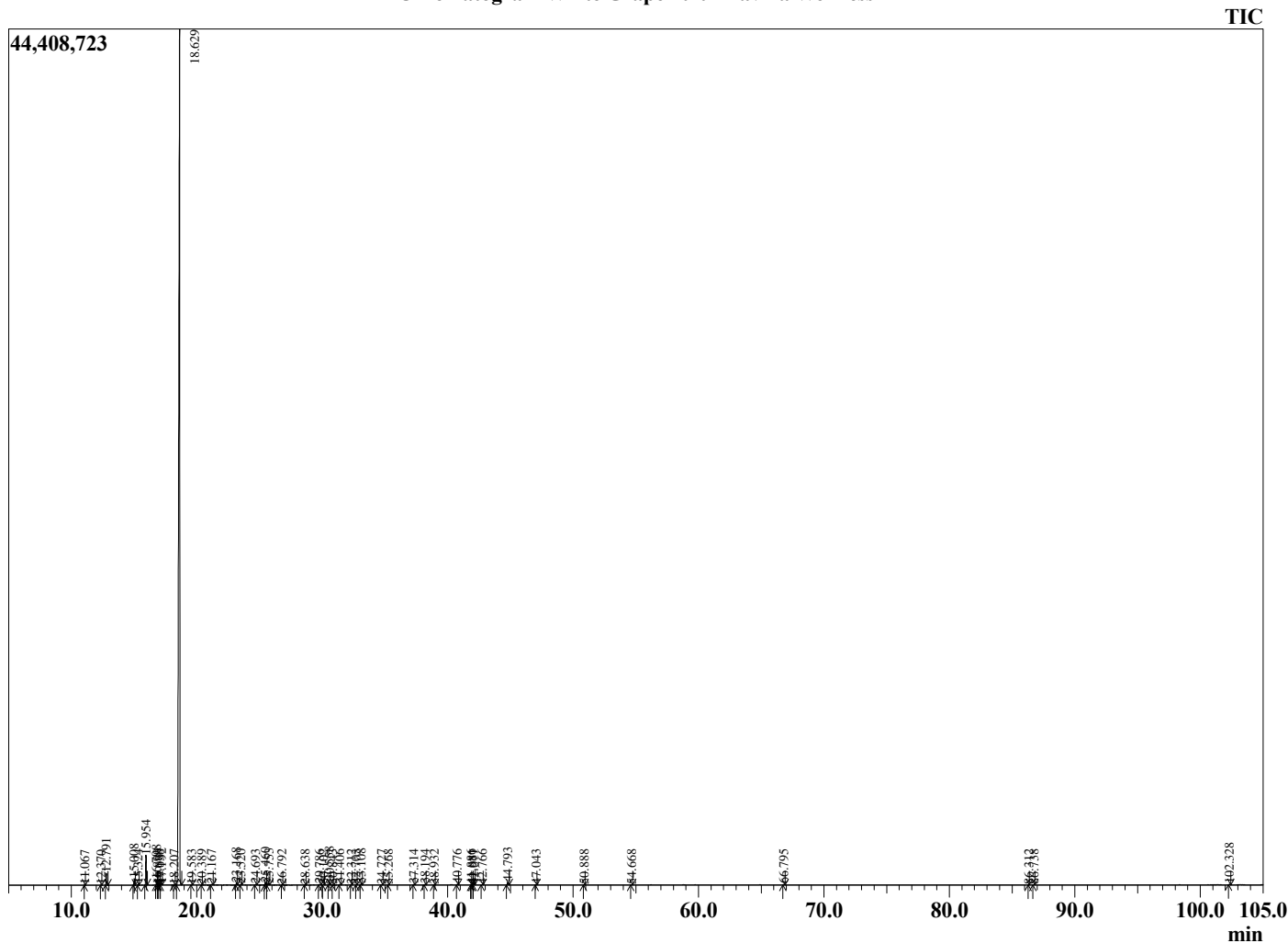
Analyzed by : Dr. Robert S. Pappas
 Analyzed : 3/13/2021 7:25:29 PM
 Sample Type : Essential Oil
 Sample Name : White Grapefruit - Davina Wellness
 Sample ID : F0D1117A
 Injection Volume : 0.10
 Instrument ID : GC-3



Peak Report TIC

R.Time	Name	Area%
11.067	Heptanal	0.01
12.370	alpha-Thujene	0.00
12.791	alpha-Pinene	0.71
15.008	Sabinene	0.39
15.324	beta-Pinene	0.05
15.954	Myrcene	1.87
16.798	Octanal	0.36
16.890	Pseudolimonene	0.02
17.038	alpha-Phellandrene	0.01
17.192	delta-3-Carene	0.07
18.207	para-Cymene	0.05
18.629	Limonene	94.46
19.583	(E)-beta-Ocimene	0.03
20.389	gamma-Terpinene	0.01
21.167	Octanol	0.06
23.168	Linalool	0.15
23.520	Nonanal	0.05
24.693	trans-para-Mentha-2,8-dien-1-ol	0.05
25.460	cis-Limonene oxide	0.16
25.753	trans-Limonene oxide	0.13
26.792	Citronellal	0.02
28.638	Unidentified	0.02
29.786	alpha-Terpineol	0.07
30.102	Unidentified	0.03
30.558	Decanal	0.27
30.843	Octyl acetate	0.02
31.406	trans-Carveol	0.05
32.312	cis-Carveol	0.04
32.703	Neral	0.01
33.108	Carvone	0.09
34.727	Geranial	0.03
35.268	Perillaldehyde	0.01
37.314	Unidentified	0.05
38.194	Unidentified	0.04
38.932	Unidentified	0.02
40.776	Unidentified	0.05
41.886	Unidentified	0.03
41.981	alpha-Copaene	0.03
42.077	Geranyl acetate	0.02
42.766	beta-Cubebene	0.02
44.793	trans-beta-Caryophyllene	0.22
47.043	alpha-Humulene	0.01
50.888	delta-Cadinene	0.03
54.668	Caryophyllene oxide	0.03
66.795	Nootkatone	0.04
86.312	Unidentified furanocoumarin	0.02
86.738	Unidentified furanocoumarin	0.03
102.328	Aurapten	0.05
		100.00

Chromatogram White Grapefruit - Davina Wellness



Comments:

The analysis of this White Grapefruit batch sample meets the expected chemical profile for authentic essential oil of *Citrus paradisi*. No contamination or adulteration was detected. The results provided in this GCMS quality analysis reflect the chemical composition of the oil and lot referenced above on the date of analysis.